



MOSCOW REGION INVESTMENT INFRASTRUCTURE

?

?

?



I want to invest in Moscow Region,
**WHAT SHOULD I
DO NEXT?**



INVESTMENT INFRASTRUCTURE



Definition:

- a pull of informational, financial, credit as well as organizational instruments created in order to provide stable and efficient investment realization
- interconnected organizations, which serve and provide investment process

Fundamental factor:

- provides favorable climate and conditions for investments
- minimizes investment risks



2012

MOSCOW REGION DEVELOPMENT CORPORATION*
established by
MOSCOW REGION GOVERNMENT

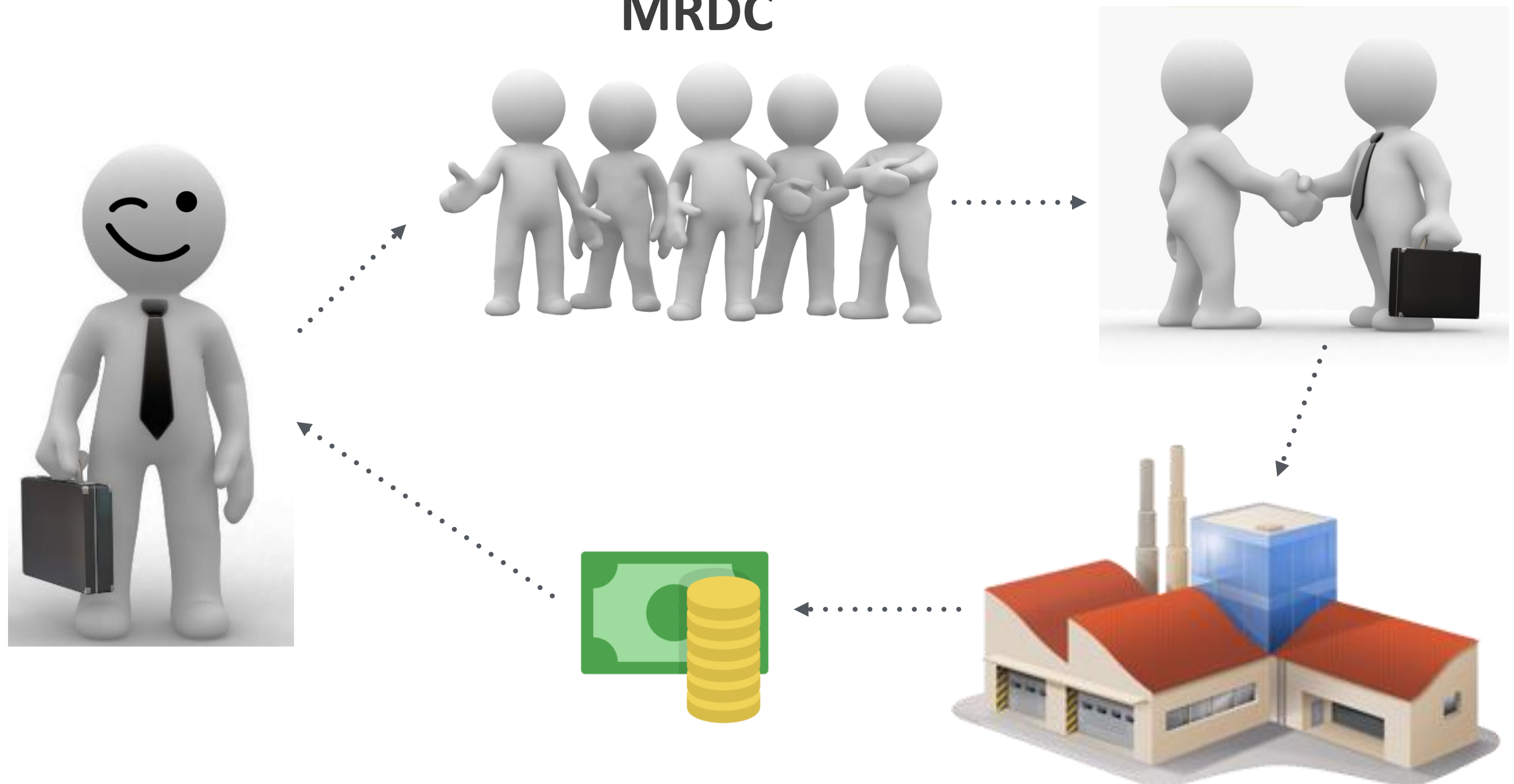
**a special institute established to promote a favorable investment climate of the region and facilitate investment projects' implementation*

MOSCOW REGION DEVELOPMENT CORPORATION



«One window», one stop center for investors looking for investment opportunities

MRDC





What we do?

- Attract investments into Moscow Region
- Provide information and statistics in the field of business operation activity (priority business sector)
- Facilitate the entry and eliminate administration risks
- Provide the best suitable sites and fields for investment projects implementation
- Establish and develop industrial parks, special economic zones, innovation clusters

MOSCOW REGION DEVELOPMENT CORPORATION



**LET US
GUIDE YOU**

**Our services are
FREE OF
CHARGE**

**STEP 1:
«Get Started»**

Analysis of the Moscow Region market within the chosen economic field, economic situation, latest trends

**STEP 2:
«Find the right site»**

Selection of best suitable sites and local business partners

**STEP 3:
«Get further full project support»**

Further full administration and support of the investment project

INFRASTRUCTURE



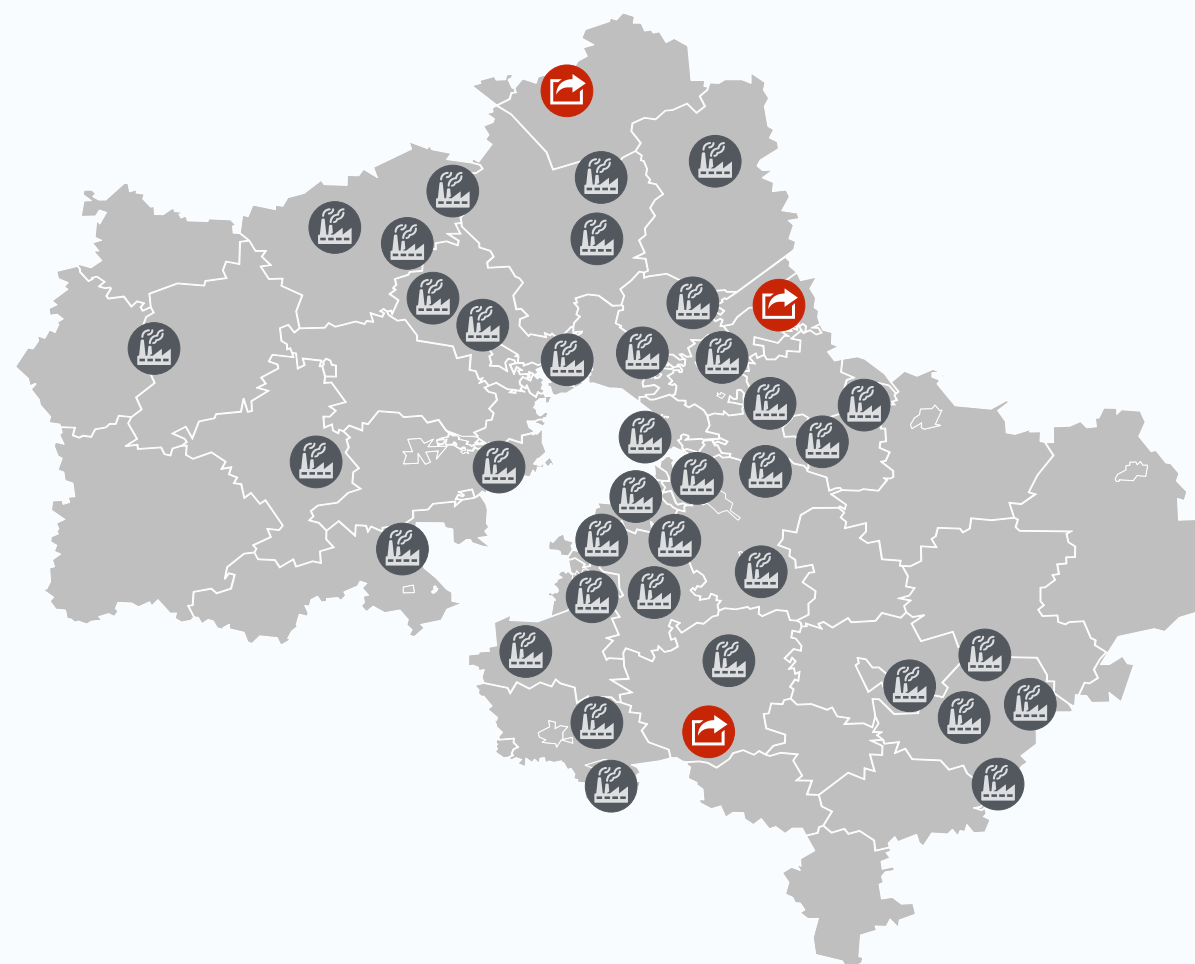
THE BIGGEST NUMBER IN RUSSIA



Industrial parks **48**



Special Economic
Zones **3**



INFRASTRUCTURE

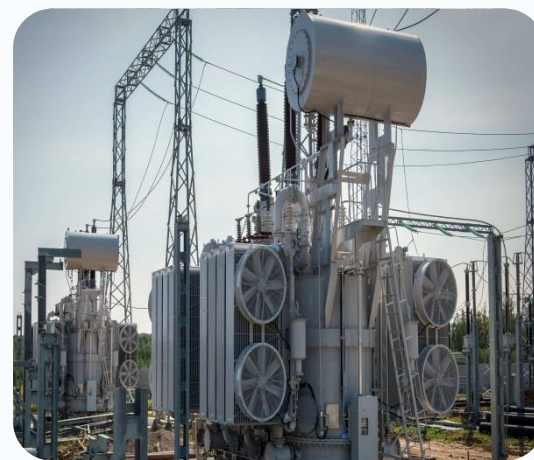


**48 Operating
Industrial Parks**



**13 Industrial Parks are
under construction**

**3 Special Economic
Zones**



SOLNECNOGORSKIY MUNICIPAL DISTRICT



1 100 km²

Total area

138 800 people

Population

81 700 people

Human Capital

8 000 students

8 state universities

More than **60 biggest companies** have production facilities in Solnechnogorsk district



Mercedes-Benz



PEPSICO

SCHÜCO



DEGA INDUSTRIAL PARK



TYPE: **Greenfield**

Space: 256 ha

Electric power supply: 30 MW

Gas supply (m³/hour): 4000

Water supply (m³/day): 1200

KOLEDINO INDUSTRIAL PARK

TYPE: **Greenfield**

Space: 365 ha

Electric power supply: 30 MW

Gas supply (m³/hour): 7000

Water supply (m³/day): 4000



SPECIAL ECONOMIC ZONES



DUBNA

Type: Technology-Innovation zone

Total area: 187 ha

Available for investors: 25 ha

Number of current residents: 124

Year of establishment: 2005



BENEFITS AND PREFERENCES FOR RESIDENTS



TAX CONCESSIONS

0%

INCOME TAX RATE
FOR THE FIRST
8 YEARS

14%

INSURANCE PAYMENTS

10 YEARS

REMISSION OF PROPERTY TAX

5 YEARS

REMISSION OF LAND
AND TRANSPORT TAXES



CUSTOMS PRIVILEGES

0%

CUSTOMS DUES

0%

VAT

5

CUSTOMS STATIONS



LAND

30-40 THSD. R

LEASE FOR 1
HECTARE ANNUALLY

15%

REPAYMENT FROM LAND
PLOT CADASTRAL VALUE



LEASE

520 RUB/SQ.M

RENTAL PRICE
FOR OFFICE PREMISES

FREE

LAND PARKING FOR PASSENGER
VEHICLES WITHIN THE
TERRITORY OF SEZ



LINKING TO NETWORKS

FREE

ONE OF THE KEY PREFERENCES
PROVIDED FOR THE DUBNA SEZ
RESIDENTS

SPECIAL ECONOMIC ZONES



STUPINO QUADRAT

Type:
Industrial and manufacturing zone

Total area: 390 ha

Number of current residents: 14

Year of establishment: 2015



GUARANTEED BENEFITS:

Tax	STUPINO QUADRAT	In the rest of the RF
Profit tax	3% first 8 years 8% next 6 years 15,5% until 2064	20%
Property	0% 10 years from the property registration	up to 2,2%
Land	0% 5 years starting from the month of the title registration	up to 1,5%
Transport	0% 5 years from the transport registration	up to 15%

VAT and customs free import of production lines
and raw materials

SPECIAL ECONOMIC ZONES



ISTOK

Type:

Technology-Innovation zone

Location:

Science and innovation city Fryazino

Total area: 60 ha

Year of establishment: 2015



BRANDS



300 + foreign investments projects from **56 countries**



Food processing
and Agriculture

MARS

DANONE

Valio

PEPSICO

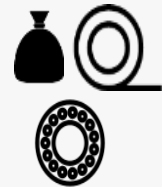
Barilla

Hochland

Nestlé

GRUPE
LACTALIS

Central
MAREVEN FOOD



Construction,
building materials,
Industrial
machinery

KNAUF

JOHN DEERE

SAINT-GOBAIN

kronospan

Danfoss

LAFARGE

ALFA
LAVAL

GRUNDFOS



Plastics,
Chemical

BASF
The Chemical Company

MICHELIN

ALCOA

Reckitt
Benckiser

Linde

Henkel

BAYER

SULZER



Medicine,
pharmaceuticals,
medical
equipment

Kimberly-Clark
PROFESSIONAL

SERVIER

VALENTA

gsk

GEDEON RICHTER

akrikin
People caring for People

HARTMANN

Other
Fields

Mercedes-Benz

LEROY MERLIN

ORIFLAME
SWEDEN

IKEA

AWA

Innovations 2016 - 2017



Moscow Region Development Corporation

Timur Andreev / CEO

Mob.: +7 (903) 798-20-78

Tel.: +7 (495) 280-79-84

t.andreev@mosregco.ru

www.mosregco.ru